



Thank you to all our parents who came to the 'Meet the Teacher' sessions. Do not worry if you could not make it, we hope these notes from our meeting will help.

We would like to start by saying how well all the children have settled into their new classes and would like to give you an opportunity to find out what you and your child can expect during their time in reception.

Foundation Stage Team



Mrs Hedges
Orange Class Teacher



Miss Byrne
EYFS Lead/ SENCo



Miss Macdonald
Red Class Teacher



Miss Lowton



Mrs Jackson



Miss Hughes



Mrs Misro



Miss Opoku-Ofori

Meet the team:

Mrs Byrne is our EYFS lead, SENCo and Deputy Head, she is always be happy to help with any queries you have about your child. In Orange class there is Mrs Hedges, the class teacher, with Miss Lowton, who all have a great deal of experience in the early years.

In Red class we have Miss Macdonald, the class teacher with Miss Hughes and Mrs Misro

All of our team have many years of experience working in Early Years.

Mrs Jackson will be teaching RE across both classes.

The early years foundation stage is based around 4 main themes:

Every child is a unique child who is constantly learning and can be resilient, capable, confident and self-assured. Children learn to be strong and independent through positive relationships.

Enabling environments support their individual needs and experiences and helps to build the strong relationships between practitioners and parents/carers.

We recognise that children develop and learn in different ways.

The framework covers the education and care of all children in early years provision, including children with special educational needs and disabilities.

Early Years Foundation Stage Framework



A unique child

Learning and Development

Planning is based around the 4 main themes of the EYFS

Positive relationships

Enabling environment

There are 7 areas to the EYFS.

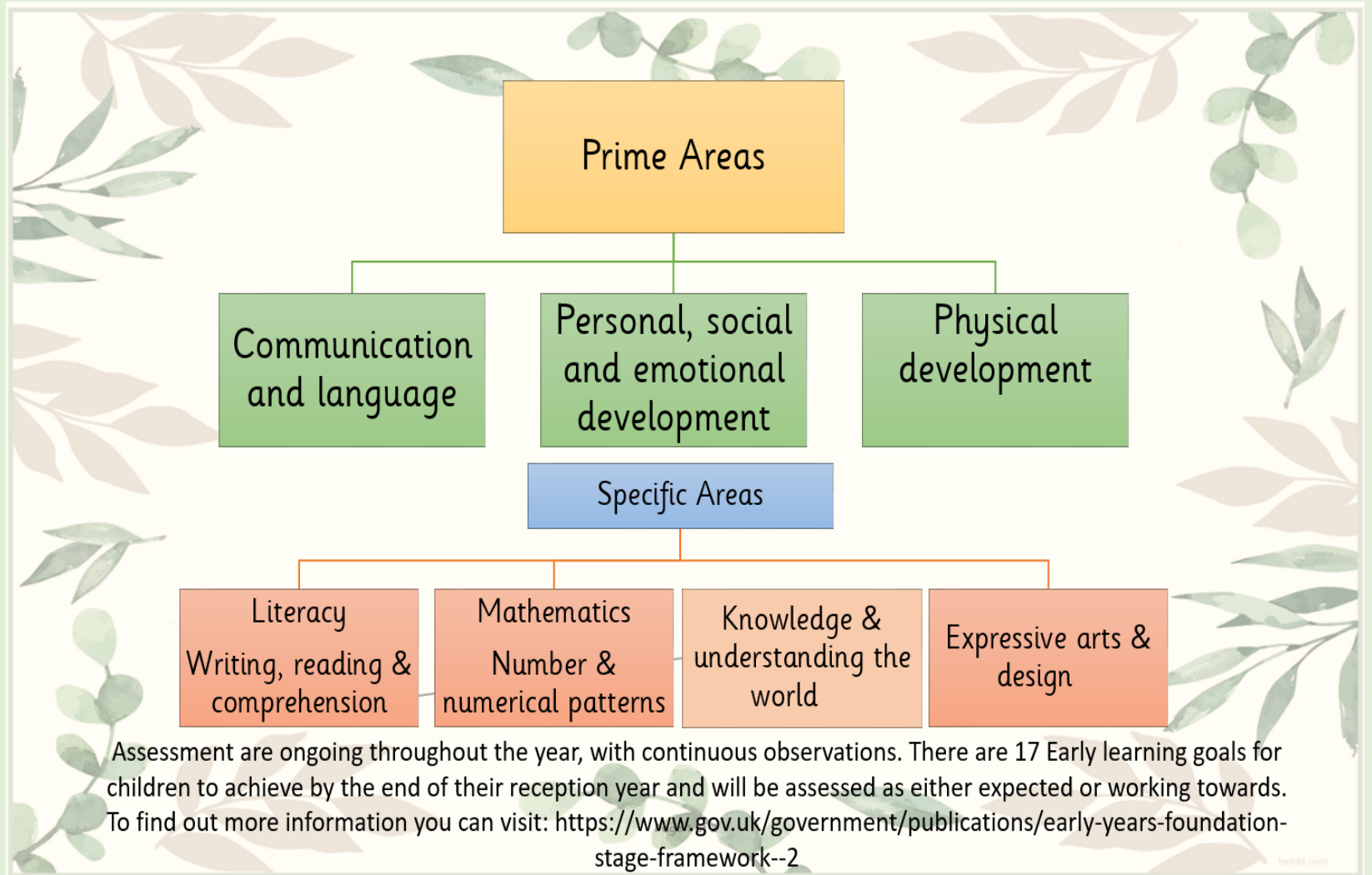
The prime areas are :

- Communication and Language
- Personal, Social and Emotional Development
 - Physical Development.

The prime areas of the EYFS curriculum underpin all aspects of your child's early education and will be taught across the curriculum.

The specific areas of the EYFS curriculum are:

- Literacy, including reading, writing and comprehension
- mathematics, including exploring number and numerical patterns
- knowledge and understanding the world, where we will explore the natural world, people, culture and communities and past and present events
- Expressive arts and design, where children explore creating with materials, being imaginative and expressive.



Our curriculum has been carefully planned to help support your child in achieving the 17 early learning goals by the end of reception, with assessments ongoing throughout the year.

Assessment in reception is carried out continually during adult and child lead activities, this ongoing assessments allow us to plan and target children's individual needs, ensuring we cater our curriculum for all pupils.

In line with government requirements, a base line assessment is carried out during the first half term, this is a short task-based assessment, and results are record and reported back to the DfE, a copy of these results is available on request. We will also carry out initial assessments to help us develop and support your child's play and early learning skills. Each term we will discuss your child's progress with you during parents evenings and end of year reports.

EYFS Assessment

- Base line assessment - This is a short task-based assessment were pupils will use practical resources to complete tasks and teachers will record the results. Schools are required to carry out the assessment within the first 6 weeks of pupils starting reception. This is then used when they leave primary school at 11 to measure progress.
- Initial assessment are carried out by their teachers using a balance of adult and child lead activities that support your child's play and early learning skills in their first year at school.
- Children will be assessed throughout the year by their teachers and this will be discussed with parents during parents evening and in the end of the year school report.
- Children are assessed at the end of the year against the Early Learning Goals.



Children will take part in PE on a Thursday, these lessons have been carefully planned and are designed to support your child in acquiring key early skills in physical education. Please ensure your child comes to school in their PE kit. This should be a plain white top, black shorts or jogging bottoms and their red school jumper/cardigan/fleece. However, if your child does come to school without their kit, we will provide a spare and they will be asked to change. If your child has long hair, please ensure this is tied back and that any earrings are removed (or covered if they can not be taken out).

Daily routine

- Doors open at 8.45, busy fingers activities
- Register
- Phonics
- Wake and shake
- Main teaching (literacy) followed by practical activities to develop a range of skills
- Snack time (milk/ healthy snack)
- Active learning time – Child initiated learning (indoors and outdoors)
- Dough disco/ mark making/letter formations
- Lunch time
- Register
- Main teaching (Maths) followed by practical activities to develop a range of skills
- Active learning time – child initiated learning (indoors and outdoors)
- Apparatus
- Story/ Class assembly
- Home time 3.15pm (parent/ adult collection)

The children will be very busy every day, with lots of carefully planned lessons and skill based learning opportunities throughout the day. Our doors open at 8:45am, please try and arrive as close to this time as possible as we will start our day with busy fingers activities which are designed to help strengthen both gross and fine motor skills, preparing your child for writing. We sit down together for our register, your children will be reminded of their lunch choice and we will use the visual timetable to help prepare us for our day. We have a daily phonics lesson, followed by wake and shake, allowing your child to feel energised and ready to learn. We will then move into our active learning time, where your child will be provided with a range of ways to learn different skills each day, linking back to the focus teaching and covering the 7 areas of the EYFS, they will also have access to snack where your child will be given a healthy fruit or veg and milk. Before lunch we will come together for another focussed teaching session of Mathematic and then get ready for lunch. After lunch we will have our register, during this half term we will be having a dough disco session to help develop your child's fine motor skills, please look online at Early years Emily dough disco if you would like to have a go at home. The afternoon focussed teaching will cover Knowledge and understanding the world, expressive arts and design, PSHE sessions and RE. We will also have active learning time again in the afternoon, followed by apparatus when the weather permits. We will finish our day with a class assembly and story before you collect your children at 3:15pm.



Reading



Phonics: Little Wandle letters and sounds

Your child will read 3 times in school and a reading book will be sent home on a Friday and collected in again on a Wednesday so you can enjoy reading for pleasure with your child.

Please make sure you sign the diary and leave a comment regarding how your child found the book

Please take care of reading and library books as there will be a charge for lost or damaged books

Keywords- children must recognise these words by sight, these will be sent home in book bags a few at a time. Please ensure they remain in book bags for us to use with children at school as well as being used at home.

Your child will also have access to our wonderful library and can chose a book to bring home each week.



Reading is a big part of your child's education and promoting a love of reading is a great way to support your child. Reading affords us so many opportunities, for example it broadens our knowledge, vocabulary, and imagination. With this in mind we invested in Little Wandle Letters and Sounds phonics scheme to help support your child to learn to read. Your child will read in school three times a week to build on their decoding skills, prosody and comprehension and will bring their book home on Friday to read with you. Reading books will need to be returned the following Wednesday so please make sure you sign their reading record and leave a comment on how they got on. As part of our phonics scheme children will be coming home with keywords to share with you. These are words that we either use frequently or do not follow our decoding rules so we need to learn them by sight. Please support your child by practising them at home. We will also be visiting our school library where your child will have access to a range of texts to bring home each week, please make sure your child returns their book so a new book can be issued.

We will visit the library each Monday, the children will be allowed to choose a book which we help them to scan out on the library computer. Each Monday the books will be scanned back in and all children who have returned a book will be able to choose a different one.

Don't forget, you can sign up at any local library's who offer a range of books, and events for free. 😊






- ▶ Please ensure you are signed up to Marvellous Me. Class teachers use this as their main general way to communicate with you.
- ▶ On the app, you can expect to receive updates about the learning your children have been doing, key achievements your child has made and important notices or reminders.
- ▶ If you interact with the teacher's message by 'high fiving' we are able to show your child that you have seen the message we have sent.
- ▶ If you need help signing up or have forgotten your login details please speak to the class teacher or contact the school office.

Please ensure you are signed up to Marvellous Me. A letter with your sign up details sent home today. More than one person can sign up.

The Class teachers use this as their main general way to communicate with you. On the app, you can expect to receive updates about the learning your children have been doing, key achievements your child has made and important notices or reminders.

Please click the 'high five' button, so that we know that you have read the message and can show the children.

If you need help signing up or have forgotten your login details please speak to the



We will ask for your child to bring in their show and tell on a Monday and they will have an opportunity to show this during that week. Where possible please try not to bring in toys but something else, maybe a souvenir from a trip or something linking to our topic that your child is happy to talk about

A show and tell rota will be sent out at the beginning of each term. Please encourage your child to bring in something either related to our topic for the term or a special achievement of theirs that they are able to talk about and share with their friends.

This half term we will be sharing our all about me booklets, please ensure these are returned as soon as possible, if you have lost your copy, please ask and we'll be happy to provide you with a copy.



To support the children with our behaviour policy we have our golden rules which are displayed in all our classrooms. Children have lots of opportunities to earn stickers for following our golden rules. When we all follow the rules, everyone should feel happy.

Praise and Reward

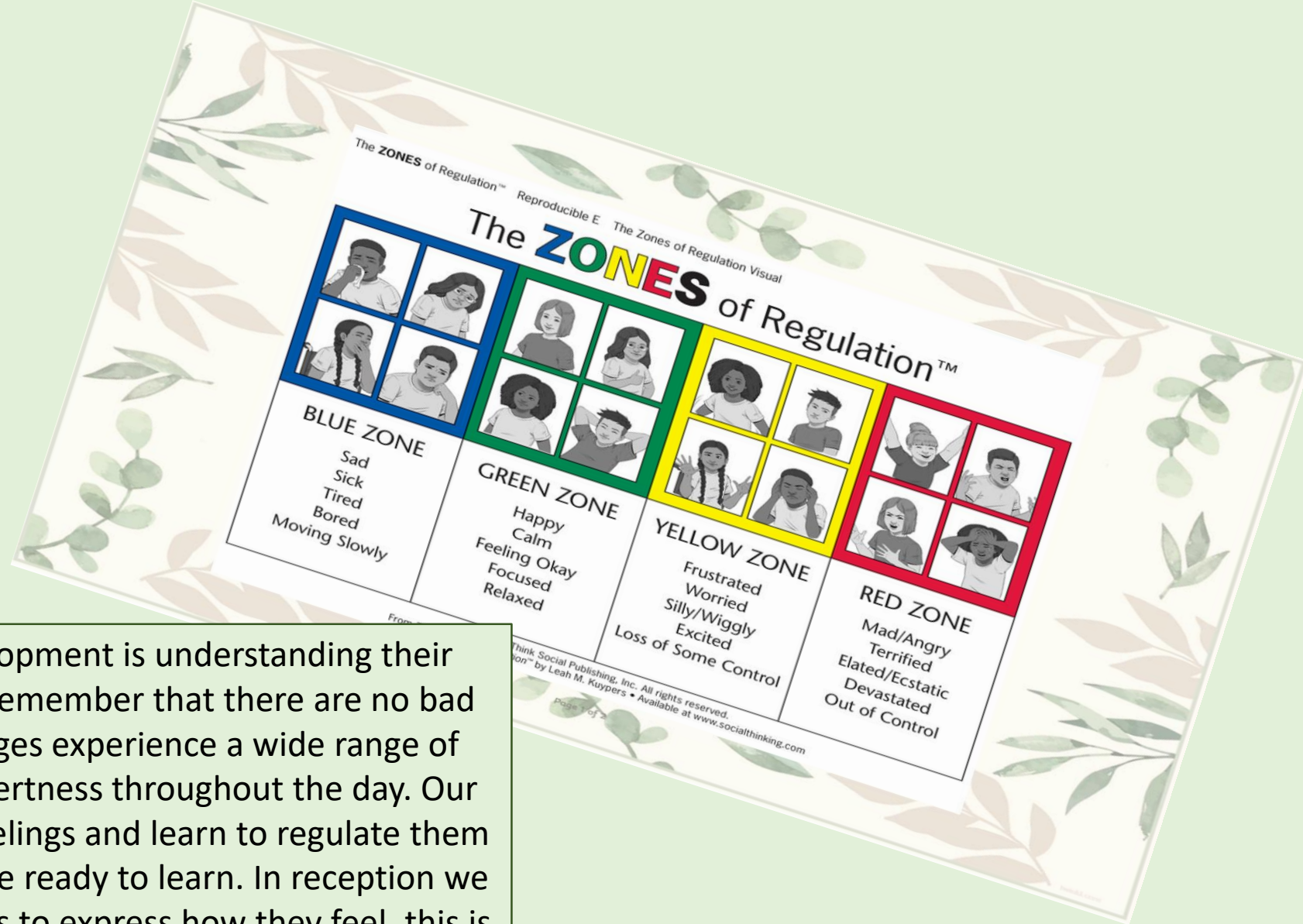
- 'Thank you' and recognition
- Smartcard stickers
- Special reward stickers
- Marvellous Me messages
- 'You make me Proud'
- 'Star of the Week'
- Responsibilities in class
- Headteacher Awards

Behaviour



We have a curriculum for behaviour (just like we have one for Maths or PE). We teach and praise pro-social behaviours, such as being kind, sitting nicely, working hard, walking sensibly, following instructions and respecting property. This forms part of everyday life at school and includes modelling of behaviour, PSHE lessons, circle times, role play and workshops and an engaging and challenging curriculum.

We recognise that children may demonstrate unsocial behaviours. We aim to build strong, trusting relationships with children and work with them to reflect on their behaviour choices to ensure they are ready to continue learning.



An important part of your child's development is understanding their feelings and emotions. It is essential to remember that there are no bad zones! Both adults and children of all ages experience a wide range of emotions, energy levels, and states of alertness throughout the day. Our goal is to help children recognise their feelings and learn to regulate them in order to take care of themselves and be ready to learn. In reception we introduce the vocabulary your child needs to express how they feel, this is supported by visual aids and colours to represent our different feelings.

Key Dates

School Dates for 2024-2025

Autumn Term 2024

Monday 2 nd September	Inset Day
Tuesday 3 rd September	Autumn Term begins
Monday 28 th October to Friday 1 st November	Half Term
Monday 4 th November	Inset Day – School Closed
Friday 20 th December	End of Term

Spring Term 2025

Monday 6 th January	Inset Day
Tuesday 7 th January	Spring Term begins
Monday 17 th February to Friday 21 st February	Half Term
Friday 4 th April	End of Term

Summer Term 2025

Tuesday 22 nd April	Summer Term begins
Monday 26 th May to Friday 30 th May	Half Term
Friday 18 th July	End of Term

Inset Days and School Closures:

Monday 21 st July	Inset Day – School Closed
Tuesday 22 nd July	Inset Day – School Closed
Wednesday 23 rd July	Occasional Day – School Closed

SAVE THE DATES! 2024-2025

- Monday 9th September – First full day
- Monday 7th October – Individual photos
- Tuesday 8th October – Phonics and maths information sessions
- Thursday 10th October – Stay and play sessions 2.15 – 3.15pm
- Monday 21st and Wednesday 23rd October - Parent evenings – 3.30 – 6.30pm
- Friday 25th October - Harvest Assembly – Red class – 9.15am and Orange class – 2.45pm
- Wednesday 6th November – School disco 3.15 – 4.15
- Monday 18th November – Come and see phonics 8.45am
- Friday 6th December – Christmas fair 2.30 – 4pm
- Tuesday 10th December – Christmas show 2.45pm
- Wednesday 18th December – Whole school panto
- Thursday 19th December – Christmas lunch and Santa Visit
- Tuesday 21st January – Maths open classrooms
- Monday 3rd March and Wednesday 5th March – parents evenings – 3.30 – 6.30pm
- Wednesday 12th March – Science open classrooms
- Friday 21st (orange) and 28th (red) March – class assembly
- Wednesday 2nd April – Easter Tombola
- Wednesday 23rd and Friday 25th April – Verse speaking heats and final.
- Monday 28th April – Class photos
- Friday 9th May – Open art gallery
- Friday 16th may – Smarties Day
- Friday 6th/13th June – Summer fair
- Friday 20th June – Sports day and family picnic
- Thursday 10th July – Transition day
- Wednesday 16th July – School disco

There are lots of events throughout the year to help keep you informed about what and how your child is learning. Don't worry all these date can be found on our website and reminders will be printed in our weekly newsletters which will also keep you informed about other events we may run throughout the year so please make sure you read it.

Now for some reminders:

- Please only bring fresh water each day for your child in a named bottle.
- All children should use a book bag – we do not allow rucksacks.
 - Please name/label your child's belongings – even their coat.
- Children should wear school uniform, including school shoes, with hair tied back and no jewellery.
- We will be using our outdoor spaces in all weather, so please ensure you send your child in with a coat each day and wellies where appropriate, we are unable to store wellies in school so please only send them in when needed.
- We have PE every Thursday, so please send your child into school in their PE kits, remembering to remove earrings and to tie hair up where needed.
- If someone else is collecting your child, please let the class teacher, or office know and they must be over 18! If there is going to be someone regularly collecting please just let us know and we can make a note.
- Please make sure you sign up to Marvellous Me as we will be sending out updates on your child's learning throughout the week and please make sure you check your child's book bag each day.
- If you have a special family event or celebration please let us know about these moments from home so your child can share them with our class.
- Each week we will chose a child for Star of the Week to recognise a child who has been working really hard, been a kind friend and followed our golden rules.

General reminders



Bring fresh water every day.

Please LABEL EVERYTHING!!!(child friendly)

Please have a book bag with only school equipment in.
Suitable clothing (coats, waterproof coats, wellies in bag)

PE- on Thursday, no earrings please. (think about clothing)

Please inform the class teacher or member in the office if someone else is collecting your child , HE/SHE MUST BE OVER 18 (if they look younger they will be asked for proof of identification)

Please check book bags(bring in every day) and website for any communication from us + Marvellous Me (informing you about our learning)

Moments from home

Star of the week



gsway Infant Sch
gswayInfants



Any questions???

Please always come and
ask if you have any
questions or concerns as
we are always here to help

